

Digital Pickup Shoe Selector 71 700 for motor cars and shuttle trains



Supplement to Uhlenbrock decoders

What it does

The pickup shoe selector is working in conjunction with any Uhlenbrock Motorola decoder. It will automatically select the front pickup shoe depending on direction, and connect it to the decoder's red lead. Thus trains will stop at the dead section in front of a signal.

Hookup

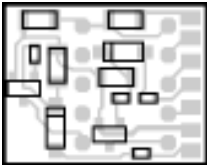
The selector's red lead is to be connected to the decoder's red lead.

The selector's green, blue, and gray leads have to be soldered to the corresponding pads on the decoder as shown in the sketch.

The selector's black lead is to be connected to the decoder's black lead (+20V). Exception: Decoder DGL 750. Here the black lead has to be soldered to a pad on the decoder as shown in the sketch.

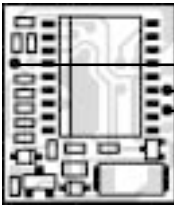
The pickup shoes' leads must be connected to the orange ones of the selector. If pickup is done from the rear shoe, the orange leads have to be changed over.

Connection Schematic 71 700 (775)

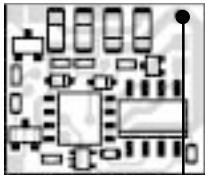


black	+20V
orange	rear pickup shoe
red	Decoder input
green	forward
orange	front pickup shoe
grey	-
blue	reverse

Connection DGL 750, DGL 751 and DAL 770

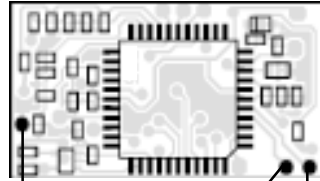


grey
green
blue



black (only 750)

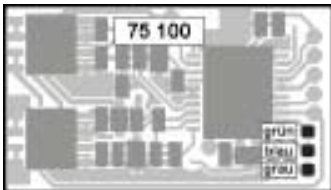
Connection DGR 755 and DFR 756



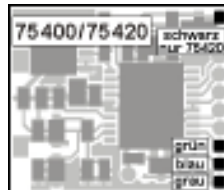
grey

blue green

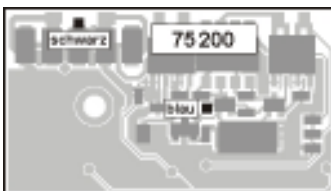
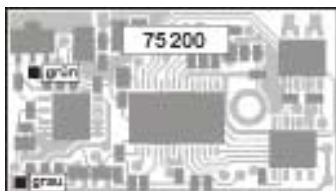
Connection 75 100



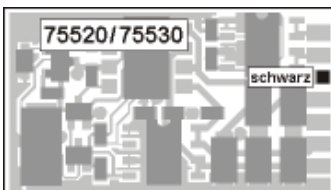
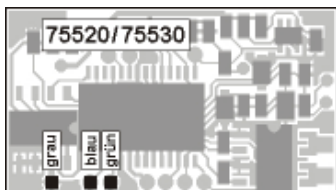
Connection 75 400 and 75 420



Connection 75 200



Connection 75 520/75 530



www.uhlenbrock.de

Be it most recent information about Intellibox, a pricelist or a listing of authorized dealers, plus various publications to download, our website warrants your visit in every case.

Warranty Statement

Every item is fully tested for functioning before shipment. If a defect occurs within two years after purchase, the item will be repaired free of charge against presentation of purchase proof. Damages caused by overload or improper treatment are not covered by this warranty.

For EU only: Please note that decoders may only used in models carrying the EC conformance label.

All brand names mentioned are registered trademarks of the respective companies.

 **Uhlenbrock Elektronik**

These are your advantages:

Service

In case of an eventual failure please return the defective item to us for repair. Please include purchase proof and a short description of defect, as well as stating the decoder's address setting.

Hotline

In case of questions, we are ready to answer them for you!
Directly contact our technician: **+ 49 (0) 20 45 - 85 83 27**
Mo - Fr except Wed 14:00 -16:00 hrs CET, Wed 16:00 -18:00 hrs CET



Uhlenbrock Elektronik GmbH
Mercatorstr.6
D-46244 Bottrop
Made in Germany



The figure 2 at the end of the item no. means that this article is delivered with an english discription.

Item no. 71 702 07.03Be